

The Super Grain Bags!longer storage life of the Cereal grains in the farmers' granary.

The Super Bag came into light with support by National Plant Protection Center (NPPC) towards the ending of 2015. The Chuzagang Geog received 4 bags with binders and tags to try it out in the farm household.

The first trial was established on 5th November, 2015. Two farmers were selected for two different grains of Maize and Paddy. So, two bags each were used for maize grains and other two for paddy grains. One each of the bags were put inside a same sized nylon/gunny sacks and filled with the well dried grains. Firstly, the inside super grain bag filled with grains were well tied and then the outer sack.

Another bag each was also filled with the well dried grains but, not inside the sacks. This was done to see and study the affect of the insect/pests from the outside, if any occurred.

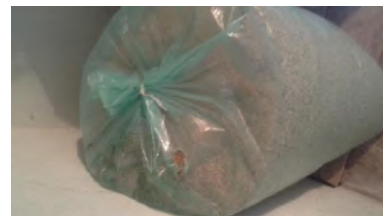


The Store Maize and Paddy Grains in Super Bags.



While it was monitored after more than a month on 22nd December, 2015 by NPPC team; it was noticed that the paddy grains were very normal, but some of

the maize grains have turned purplish blue in the kernel. Dr. Thinley of NPPC advised that these grains are very poisonous and harmful. Our farmers usually feed these grains to the cattle or domestic animals. "It's best to discard" he advised. Those maize grains were not well dried, and the storage room was more congested and with less aeration. Howsoever, till date there has been no adverse affect. The two households' taking up the super bag trial have triggered interest with the other farmers nearby. They are interested to take up this super bag program, though some raised issue on the high price on the bag at Nu. 90.00 per bag.



The stored grains, Maize grains and Rodent affected paddy bag.

Later, with 4 + 5 more additional bags distributed by DAO; it was used for the storage of Red Lentil seeds procured from the farmers. While some lentils were stored in plain nylon thread sacks in well aerated wooden floored room; the bruchid beetles infested it. These beetles were quite small, the size of the red lentil grains. Some insecticides were sprayed and the pest was controlled. Those few bags properly tied in super bags were well protected and unaffected.

Yet again, in two of the bags, it was the management flaws. The farmers tricked us upon early procurement



of the grains complaining of the

The beetle infested lentil without super bag and clean lentil seeds in Super bag.

Bruchid beetles infestation. It was otherwise. They did not want the grains to lose weight in drying and ultimately earning less. Therefore, those not well dried grains got spoilt inside the super bag.



The spoilt Red Lentil Seeds due to high moisture and the final cleaned and stored seeds.

This time, Chuzagang being new at hand with the super bag and untimely usage, we faced few inconveniences and failures but this will be taken as a lesson towards next program and will be alert to avoid the same mistakes again.

In general, the farmers are interested in the usage of the Super Grain Bags and Chuzagang would like to take up more bags in the coming fall season. This means we will need the bags supplied by now at this time of the year.

Compiled by:

Tashi Dawa
Agriculture Extension Supervisor II
RNR-EC, Chuzagang Geog.